



“The Clubhouse” Finishes its Third Season with Greene HD and HDMC-1

The Clubhouse has brought golfers of all interest and skill levels together for a fast-paced, enjoyable 30 minutes that has motivated and inspired, marketed new products, launched new talent, educated, instructed and entertained.

The backdrop of each episode is a golf course “clubhouse”

where players meet to eat, drink, entertain and have a great time. The show is designed to appeal to both male and female audiences of the 25-54 age demographic.

“The Clubhouse” is in its third season with seasons two and three being produced by Greene HD using the HDMC-1. •

Greene HD and HDMC-1 Make Their Debut Appearance at the Cine Gear Expo



The Cine Gear Expo, in its 13th year, has grown from a one day social event with a hands-on equipment display to become the premiere film, video and digital media expo, networking

event and seminar series for the entertainment production and post-production community in Hollywood.

Held at Paramount Pictures’ studios, this year’s Cine Gear

HDMC-1 *The Most Versatile HD Television Production Mobile in North America*

Cine Gear Expo Continued...

Expo continued to draw a focused audience of top-notch industry professionals. Many exhibitors chose Cine Gear Expo to introduce new and groundbreaking equipment and services to professionals in the community, including HDMC-1, which created a buzz of excitement during its first appearance at Cine Gear Expo. "It was a huge success," said Brian Greene of Greene HD Productions. "We were swamped as we showcased the coach to Hollywood for the first time." •



HDMC-1 *The Most Versatile HD Television Production Mobile in North America*



Built on a 45' XLV2S Marathon Coach, the HDMC-1 feeds uncompressed, real-time high-definition images directly into Apple computer drives for instant, long-term access to material. The HDMC-1 provides efficient, mobile post-production abilities, saving weeks of turnaround time and allowing editors to immediately edit material.



Master Control is where it all happens! All of the cameras are recorded separately on the special built server/computer system by Apple. This allows immediate access to the material for editing purposes as soon as the live show is complete.

High-Definition Mobile Coach Advantages:

- Up to 12 HD Cameras
- Two Advanced Edit Stations
- In-Motion Editing
- Tapeless Recording Environment
- "Stadium" Seating in Production Room
- Audio Mixing Cabin
- Fiber-Based HDSDI Cable
- Producers Lounge
- Full Galley / Full Bath
- Sleeps up to 4 Crew Members
- Most Luxurious in the Industry

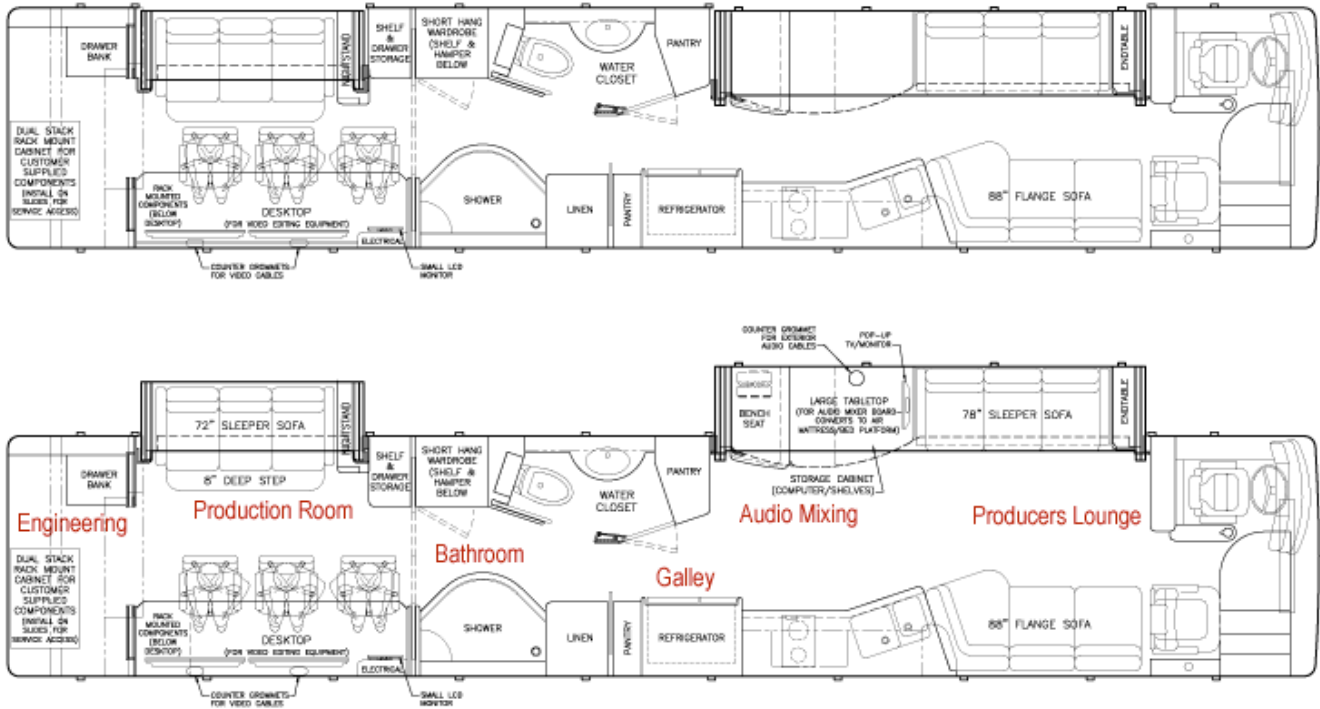
HDMC-1 Features:

- 24TB Tapeless ISO Recording for up to 7 Channels
- Complete HDTV Mobile Edit Suite by Apple Computers
- Ross Synergy Multi-Definition 2 ME Switcher
- Miranda Kaleido HD Multi-Image Display
- Yamaha 56 Channel Audio Mixer
- Leader 7700 Rasterizer
- Sony HDCam Cameras and Studio VTRs



The HDMC-1 contains one 50" monitor, one 15" monitor, and two 23" monitors with stadium seating for directors in the production room. A complete audio mixing station with a Dell Monitor is available near the full bath, full galley, and the producers lounge features a 46" monitor for full presentation.

HDMC-1 Floorplan



Greene HD Productions, Inc.

6724 Calender Rd., Arlington, Texas 76001

www.greenehdtv.com

Now Booking for 2009
817-860-4086

PROJECT PARTNER



World's Largest Prevost Converter

800-234-9991

www.marathoncoach.com